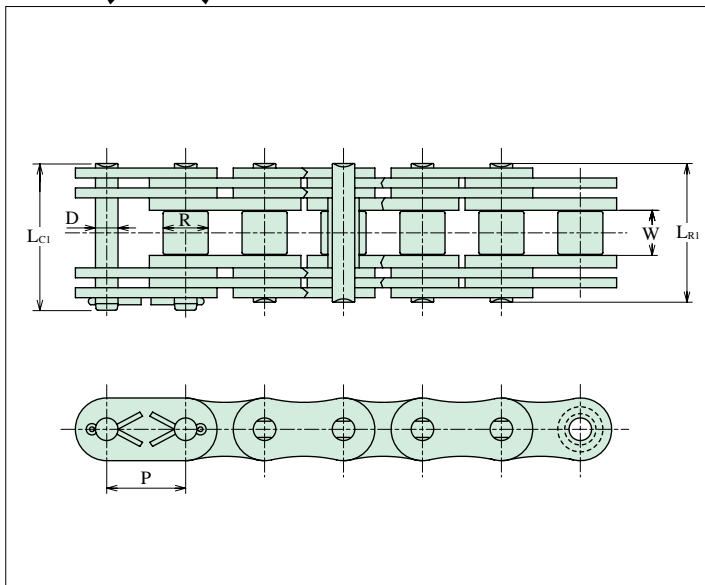


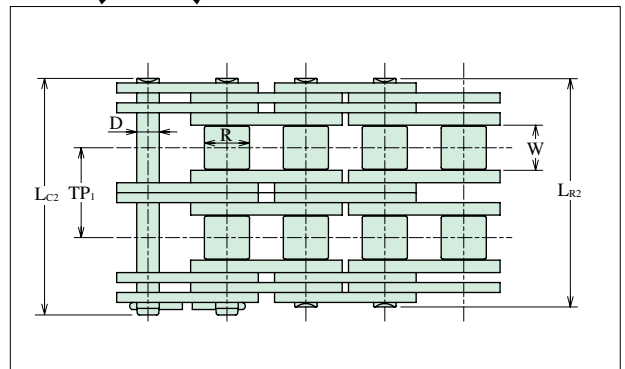
Double Capacity Chains

Double Capacity chain consists of twice the number of side plates as single strand chain, therefore its working load is close to standard double strand chain. Double Capacity chain operate on standard single strand sprocket. Multiple strand Double Capacity chains are not available. Chain speed should be less than 50 m /min.

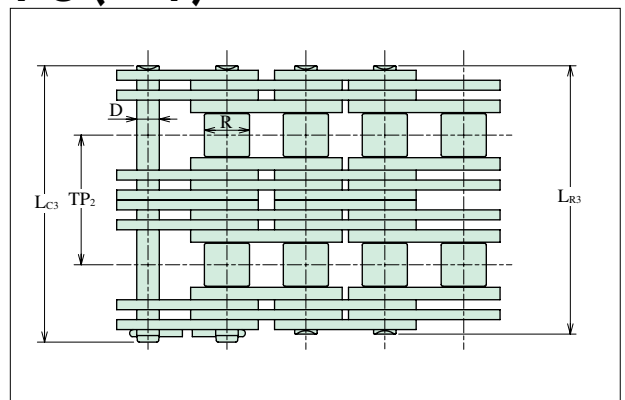
DC (X2)



TC (X3)



FC (X4)



$$LR2=LR1+TP1$$

$$LC2=LC1+TP1$$

$$LR3=LR1+TP2$$

$$LC3=LC1+TP2$$

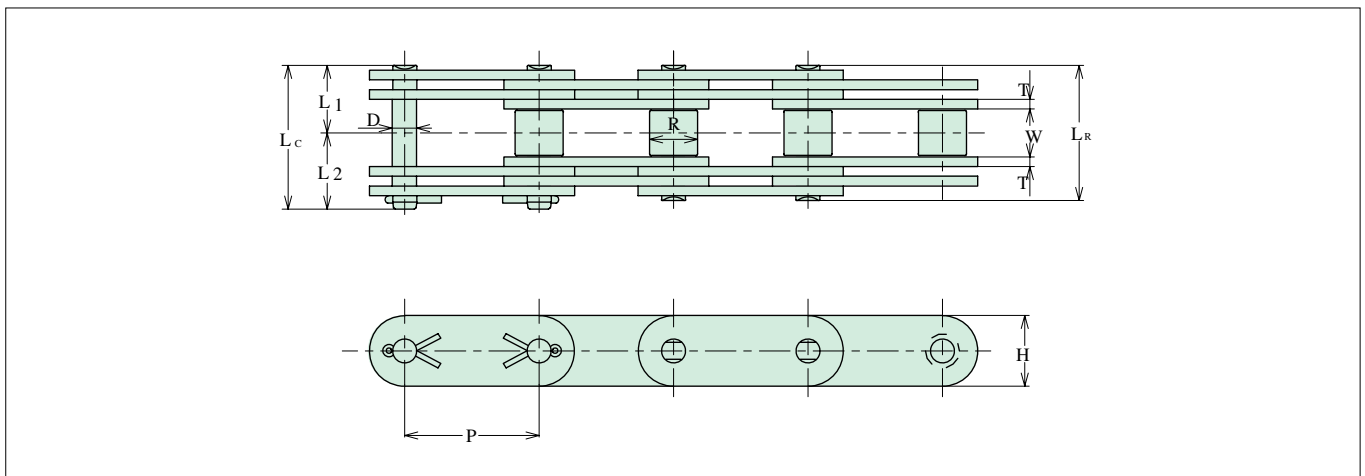
ANSI

Chain No.	Dimensions - mm								Average Ultimate Strength (kN)			Maximum Allowable Load (kN)
	Pitch	Roller		Pin		Transverse Pitch		DC	TC	FC		
		Width	Dia.	Dia.	Length	TP1	TP2					
P	W	R	D	LR1	LC1	TP1	TP2	DC	TC	FC	DC	
80 DC·TC·FC	25.40	15.88	15.88	7.93	45.60	48.70	29.30	42.10	149	223	298	22.40
100 DC·TC·FC	31.75	19.05	19.05	9.53	55.80	59.50	35.80	51.80	224	336	448	33.50
120 DC·TC·FC	38.10	25.40	22.23	11.10	69.00	73.30	45.40	64.20	317	475	634	49.00
140 DC·TC·FC	44.45	25.40	25.40	12.70	76.40	81.10	48.90	71.30	410	615	820	64.40
160 DC·TC·FC	50.80	31.75	28.58	14.28	90.00	95.10	58.50	84.10	522	783	1044	79.80
180 DC·TC·FC	57.15	35.70	35.70	17.45	101.60	107.70	65.80	94.60	670	1005	1340	103.00
200 DC·TC·FC	63.50	38.10	39.67	19.83	111.20	120.00	71.60	103.60	857	1285	1714	133.00
240 DC·TC·FC	76.20	47.63	47.63	23.78	135.60	143.20	87.80	125.80	1286	1929	2572	193.00

BS

Chain No.	Dimensions - mm								Average Ultimate Strength (kN)			Maximum Allowable Load (kN)
	Pitch	Roller		Pin			Transverse Pitch		DC	TC	FC	DC
		Width	Dia.	Dia.	Length		TP1	TP2				
P	W	R	D	LR1	LC1	TP1	TP2	DC	TC	FC	DC	
16BDC·TC·FC	25.40	17.02	15.88	8.26	50.00	53.20	31.90	44.70	130	195	260	19.50
20BDC·TC·FC	31.75	19.56	19.05	10.16	56.00	60.40	36.50	50.50	201	301	402	30.20
24BDC·TC·FC	38.10	25.40	25.40	14.63	75.40	80.50	48.40	68.00	340	510	680	51.20
28BDC·TC·FC	44.45	31.00	27.94	15.88	93.00	98.80	59.60	84.80	424	636	848	63.80
32BDC·TC·FC	50.80	31.00	29.21	17.81	92.40	98.50	58.60	83.80	520	780	1040	78.40

Double Capacity Double Pitch Chains



DOUBLE PITCH

Chain No.	Dimensions - mm										Average Ultimate Strength (kN)	Maximum Allowable Load (kN)	Average Chain Weight (kg/m)
	Pitch	Roller		Pin				Plate					
		Width	Dia.	Dia.	Length			Height	Thickness				
P	W	R	D	LR	LC	L1	L2	H	T	kN	kN	kg/m	
C2040 DC	25.40	7.95	7.92	3.96	23.00	24.70	11.50	13.20	11.40	1.50	38.20	4.02	0.50
C2050 DC	31.75	9.53	10.16	5.08	28.80	30.50	14.40	16.10	15.00	2.00	63.80	6.72	0.85
C2060H DC	38.10	12.70	11.91	5.95	42.20	44.20	21.10	23.10	17.00	3.20	109.80	11.56	1.46
C2080H DC	50.80	15.88	15.88	7.93	52.00	55.10	26.00	29.10	22.60	4.00	180.40	18.99	2.50
C2100H DC	63.50	19.05	19.05	9.53	62.00	65.60	31.00	34.60	28.60	4.80	274.00	28.84	3.81
C2120H DC	76.20	25.40	22.23	11.10	77.80	82.10	38.90	43.20	34.90	5.60	372.00	39.16	5.50
C2160H DC	101.60	31.75	28.58	14.28	97.40	102.60	48.70	53.90	47.60	7.20	612.00	64.42	9.27